

Selected Assembly: root  
Model Number: YCD210C4HACA

Selected Assembly: 91f39f8d-5292-4345-9818-7eb3d409cca4  
YCDUP379 PARTS LIST  
Parts List Number: YCD353#YCDUP379  
Model Number: YCD210C4HACA

YCDUP379 PARTS LIST

Parts List Number: YCD353#YCDUP379

Model Number: YCD210C4HACA

Part No.	Reference	Quantity	Description
----------	-----------	----------	-------------

<p style="font-size: 1.2em; margin: 0;">Model Nomenclature</p>	<p>75000905</p>	<table border="1" style="margin: 0 auto; border-collapse: collapse;"> <tr> <td style="padding: 2px;">REV</td> </tr> <tr> <td style="padding: 2px;">D</td> </tr> </table>	REV	D																						
REV																										
D																										
<table style="margin: 0 auto; border-collapse: collapse;"> <tr> <td style="padding: 0 10px;">Y</td> <td style="padding: 0 10px;">C</td> <td style="padding: 0 10px;">D</td> <td style="padding: 0 10px;">0</td> <td style="padding: 0 10px;">9</td> <td style="padding: 0 10px;">0</td> <td style="padding: 0 10px;">A</td> <td style="padding: 0 10px;">3</td> <td style="padding: 0 10px;">L</td> <td style="padding: 0 10px;">0</td> <td style="padding: 0 10px;">A</td> <td style="padding: 0 10px;">A</td> </tr> <tr> <td style="padding: 0 10px;">1</td> <td style="padding: 0 10px;">2</td> <td style="padding: 0 10px;">3</td> <td style="padding: 0 10px;">4</td> <td style="padding: 0 10px;">5</td> <td style="padding: 0 10px;">6</td> <td style="padding: 0 10px;">7</td> <td style="padding: 0 10px;">8</td> <td style="padding: 0 10px;">9</td> <td style="padding: 0 10px;">10</td> <td style="padding: 0 10px;">11</td> <td style="padding: 0 10px;">12</td> </tr> </table>			Y	C	D	0	9	0	A	3	L	0	A	A	1	2	3	4	5	6	7	8	9	10	11	12
Y	C	D	0	9	0	A	3	L	0	A	A															
1	2	3	4	5	6	7	8	9	10	11	12															
<p>Digits 1,2 Product Type YC = Packaged Gas/Electric YG = Packaged Gas/Electric (Gemini) TC = Packaged Cooling WC = Packaged Heat Pump</p>	<p>Digit 8 Electrical Characteristics 1 = 208-230/60/1 3 = 208-230/60/3 4 = 460/60/3, 380-415/50/3 D = 380-415/50/3 K = 380/60/3 T = 200/50/3 W = 575/60/3</p>	<p>Digit 3 Airflow Configuration D = Downflow H = Horizontal</p>																								
<p>Digits 4,5,6 Nominal Gross Cooling Capacity(MBh) 036 = 3 Tons (STD) 037 = 3 Tons (High Efficiency) 048 = 4 Tons (STD) 049 = 4 Tons (High Efficiency) 060 = 5 Tons (STD) 061 = 5 Tons (High Efficiency) 074 = 6 1/4 Tons (STD) 075 = 6 1/4 Tons (High Efficiency) 090 = 7 1/2 Tons (STD) 091 = 7 1/2 Tons (High Efficiency) 102 = 8 1/2 Tons (STD) 103 = 8 1/2 Tons (High Efficiency) 120 = 10 Tons (STD) 121 = 10 Tons (High Efficiency) 126 = 10 Tons (Gemini) 150 = 12 1/2 Tons (STD) 151 = 12 1/2 Tons (High Efficiency) 180 = 15 Tons (STD) 181 = 15 Tons (High Efficiency) 186 = 15 Tons (Gemini) 210 = 17 1/2 Tons (STD) 211 = 17 1/2 Tons (High Efficiency) 240 = 20 Tons (STD) 241 = 20 Tons (High Efficiency) 246 = 20 Tons (Gemini) 300 = 25 Tons (STD) 301 = 25 Tons (High Efficiency)</p>	<p>Digit 9 Secondary Capacity 0 = No Heat L = Low Heat M = Medium Heat H = High Heat</p>	<p>Digit 10 Factory Installed Options Examples: 0 = No Factory Installed A = Factory Installed Economizer B = Oversize C = Oversize and Economizer D = Installed TIM-E W/Oversize Motor E = Factory Installed Economizer W/TIM-E F = Factory Installed TCI G = Factory Installed Economizer W/TCI</p>																								
<p>Digit 7 Major Development Sequence</p>	<p>Digit 11 Minor Design Sequence</p>	<p>Digit 12 Service Digit</p>																								

MODEL NUMBER NOMENCLATURE

Parts List Number: YCD353#YCDUP379

Model Number: YCD210C4HACA

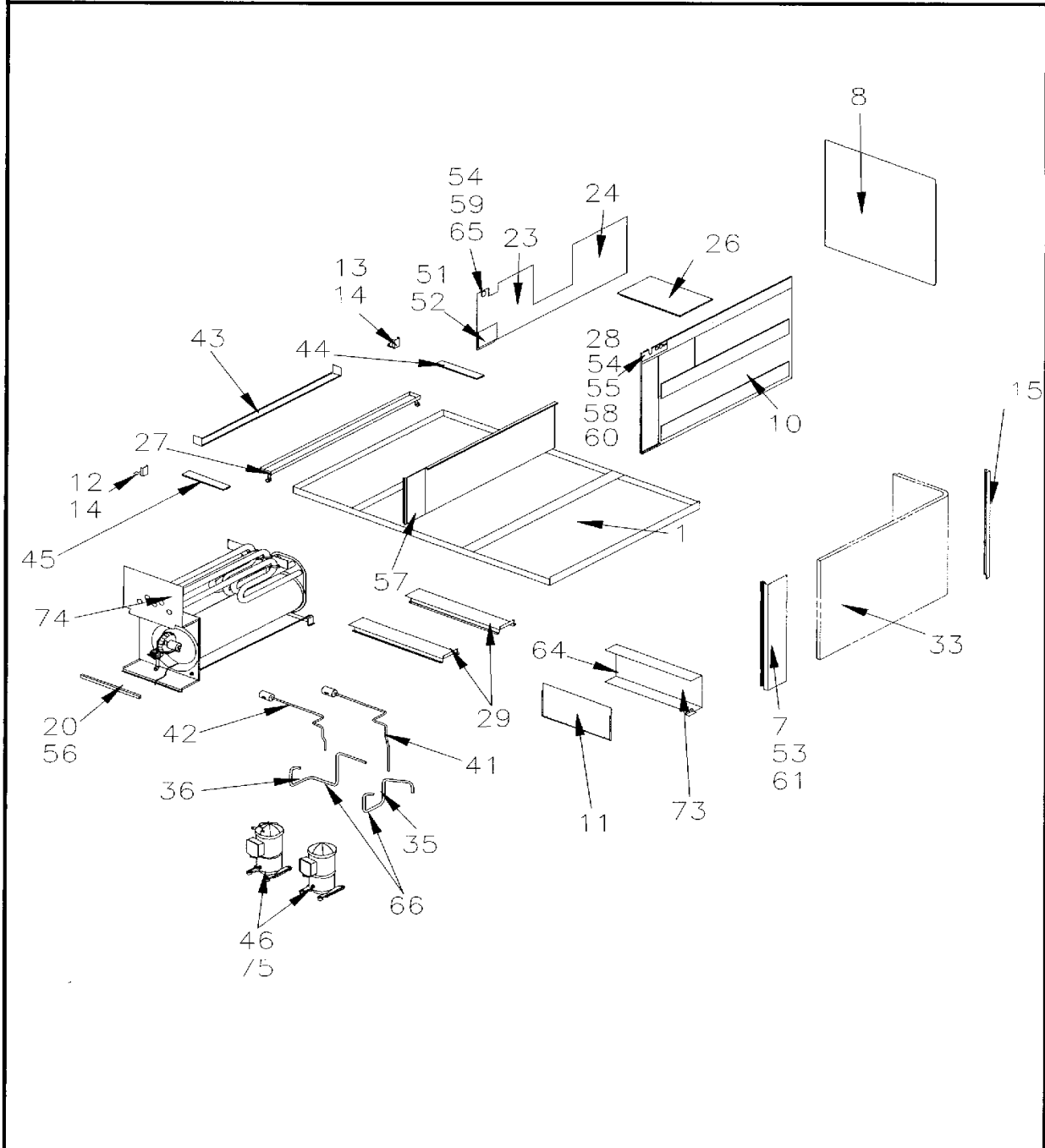
Part No.	Reference	Quantity	Description
----------	-----------	----------	-------------

General Assembly

75003136

REV  
A

Typical Illustration. Unit may not appear exactly as shown.



GENERAL ASSEMBLY VIEW 1  
Parts List Number: YCD353#YCDUP379  
Model Number: YCD210C4HACA

Part No.	Reference	Quantity	Description
ADH00011	52	1	ADHESIVE; SPRAY - DUCT LINER
ANG00927	*	1	ANGLE; BOTTOM COIL SUPPORT
BAS01484	1	1	BASE; WELD ASSEMBLY
BOF00222	12	1	BLOCKOFF; CORNER POST
BOF00223	13	1	BLOCKOFF; CORNER POST
BOF00268	43	1	BLOCKOFF; AIR ASSY
BOF00269	44	1	BLOCKOFF; AIR ASSY
BOF00270	45	1	BLOCKOFF; AIR ASSY
BOF00389	23	1	BLOCKOFF;TOP INDOOR FAN FRONT ASSEMBLY
BOF00390	24	1	BLOCKOFF;TOP INDOOR FAN REAR
BRK01241	29	1	BRACKET;LIFT ASSEMBLY
BRK02400	*	1	BRACKET; DRAIN PAN END
BTN00037	57	1	BUTTON; 1.00 DIA HOLE
BUS00178	61	1	BUSHING; SNAP, .88 MTG. W/.69 HOLE
BUS00269	55	1	BUSHING; 1.31 ID X .45 LG SNAP BUSHING
BUS00334	54	4	BUSHING; SNAP, UNIVERSAL .88 MTG W/MAX .56 ID BLACK NYLON, MAX PANEL THICK = .125
BUS00397	59	1	BUSHING; SNAP, 2.25 INCH OD X 1.97 ID, MAX PANEL THICKNESS 0.25, BLACK NYLON
CLP00190	65	2	CLIP; FLEXIBLE TRIM 10 FT LONG
CMP00089	56	1	CLAMP; CONDUIT, RIGID, .50 NOM, 1 HOLE MTG, STL
CMP00225	28	1	CLAMP; TUBE .50 DIA
CNT01015	60	1	CONTROL, LIMIT, 135 OPEN, 105 CLOSE
COL10161	33	1	COIL; OUTDOOR WELD ASSEMBLY
COM07064	75	1	COMPRESSOR; CSHB-100K-0*00/CSHB-100K-0*0C, 10 TON, 400/50/3, 460/60/3, BRAZE SWEAT, MINERAL OIL (OIL00042)
COM07172	75	1	COMPRESSOR; SSR081A4BPZ, 6.8 TON, 460/60/3, 380/420/50/3, R22/MO
DHY00180	*	2	DRIER; FILTER/SUCTION LINE, TYPE 50S9, 1 1/8 IN. ODF CONN (ASD50S9VV)
DHY00225	42	1	DRIER;FILTER,3/8 INLET,1/2 OUTLET,SWEAT CONNECTIONS
DHY00226	41	1	DRIER; FILTER, 5/8 INLET, 1/2 OUTLET, SWEAT CONNECTIONS
GKT02118	14	2	GASKET; .25 THK X 3.00 X 4.00
GRM00106	58	1	GROMMET; .88 ID X .05 GRV
GRM00271	*	1	GROMMET; .90 ID X .06 GROOVE
INS02005	51	1	INSULATION; .50T X 11.30W X 30.30
IRT00017	64	2	INSERT; BUMPER-STOP, 0.468 OD X 0.81 LG, BLACK RUBBER
MNT00642	46	4	MOUNT, COMPRESSOR MOUNTING
MNT01405	46	4	MOUNT; COMPRESSOR HARDWARE
PAI00077	*	0	PAINT; SLATE GREY (SHIPPING UOM 1 GAL HAZ)
PAI00086	*	0	PAINT; SPRAY, SLATE GREY, MID GLOSS(60) (SHIPPING UOM 12 OZ HAZ)
PAN01976	27	1	PAN; DRAIN, 70.1"
PLU00439	53	1	PLUG; RUBBER
PNN01593	11	1	PANEL;FRONT
PNN01643	7	1	PANEL; COMPRESSOR, END

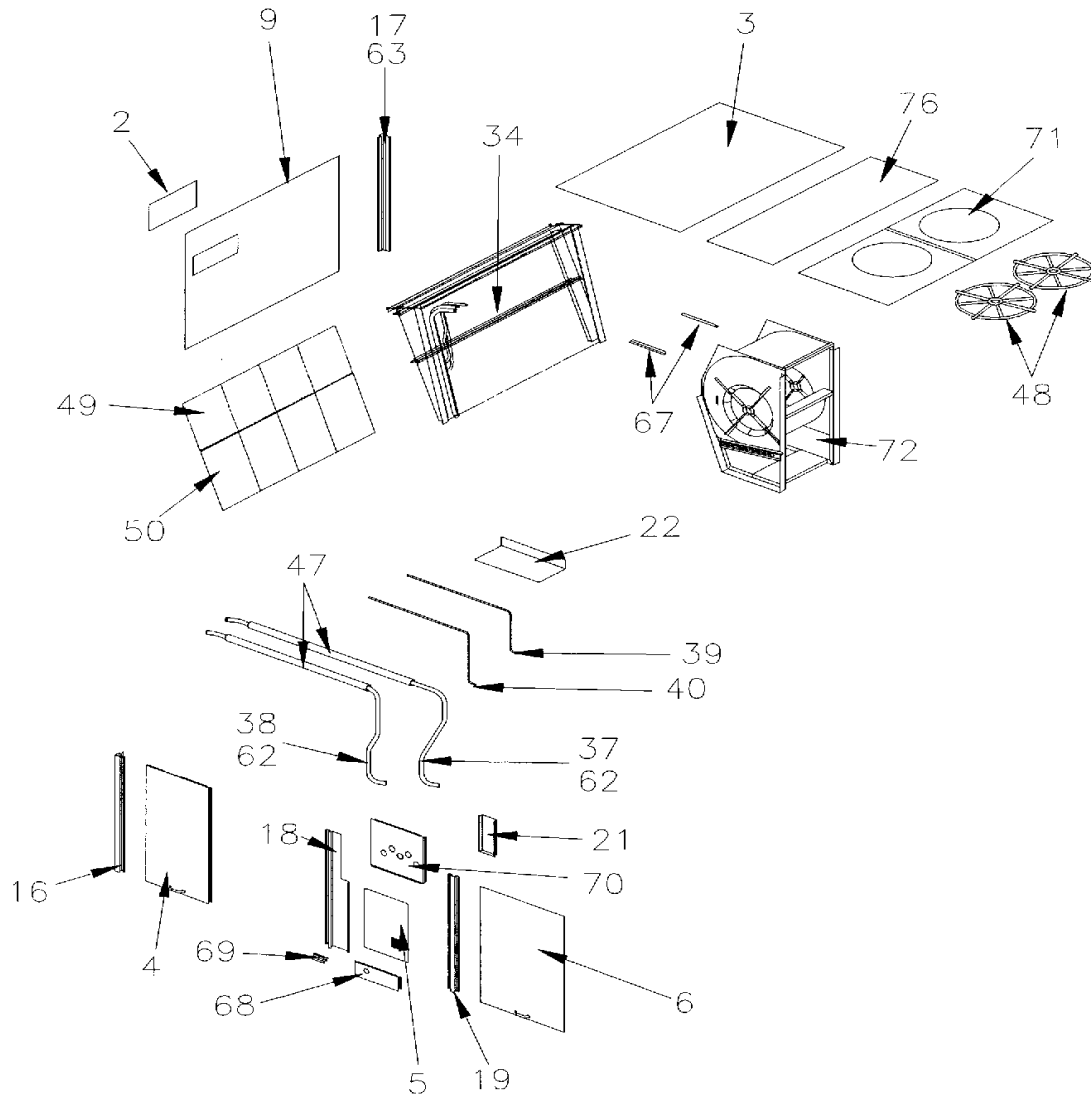
PNN01910	10	1	PANEL;DIVIDER HEAT TO OUTDOOR SECTION ASSEMBLY
PNN02177	8	1	PANEL; REAR, ASSEMBLY
PNN08148	*	1	PANEL, INSULATION RETAINER
RIV00009	*	2	RIVET; 3/16', ALUMINUM, BLIND AD64BS
RTR00127	*	3	RETAINER, INSULATION
SHD00298	*	1	SHIELD; DRIP SUCTION LINE
SRP00213	*	1	STRAP; .625 OD TUBE SIZE
SUP01473	15	1	SUPPORT; CORNER POST OD SECTION
SUP01479	26	1	SUPPORT;EVAPORATOR FAN
SUP02787	20	1	SUPPORT, GAS VALVE
SWT01158	35	1	SWITCH; HI PRESSURE, SPST, 600PSI, -20-150 DEG F, 2AMP @ 24V
SWT01629	36	1	SWITCH; HIGH PRESSURE, -4250P/325CL, .25 FFL W/ DEFLATOR, 72 IN LEADS W/ 1/4 FEMALE AND MALE QC, RED
TER00312	*	0	TERMINAL; 8IN. TIE CABLE
TUB09816	35	1	TUBE; DISCHARGE, CKT 1
TUB09839	41	1	TUBE; LIQUID CKT 1
TUB09840	42	1	TUBE; LIQUID CKT 2
TUB09841	36	1	TUBE; DISCHARGE, CKT 2
WAS00720	*	6	WASHER; .375 ID X 2.00 OD

General Assembly

75003128

REV  
A

Typical Illustration. Unit may not appear exactly as shown.



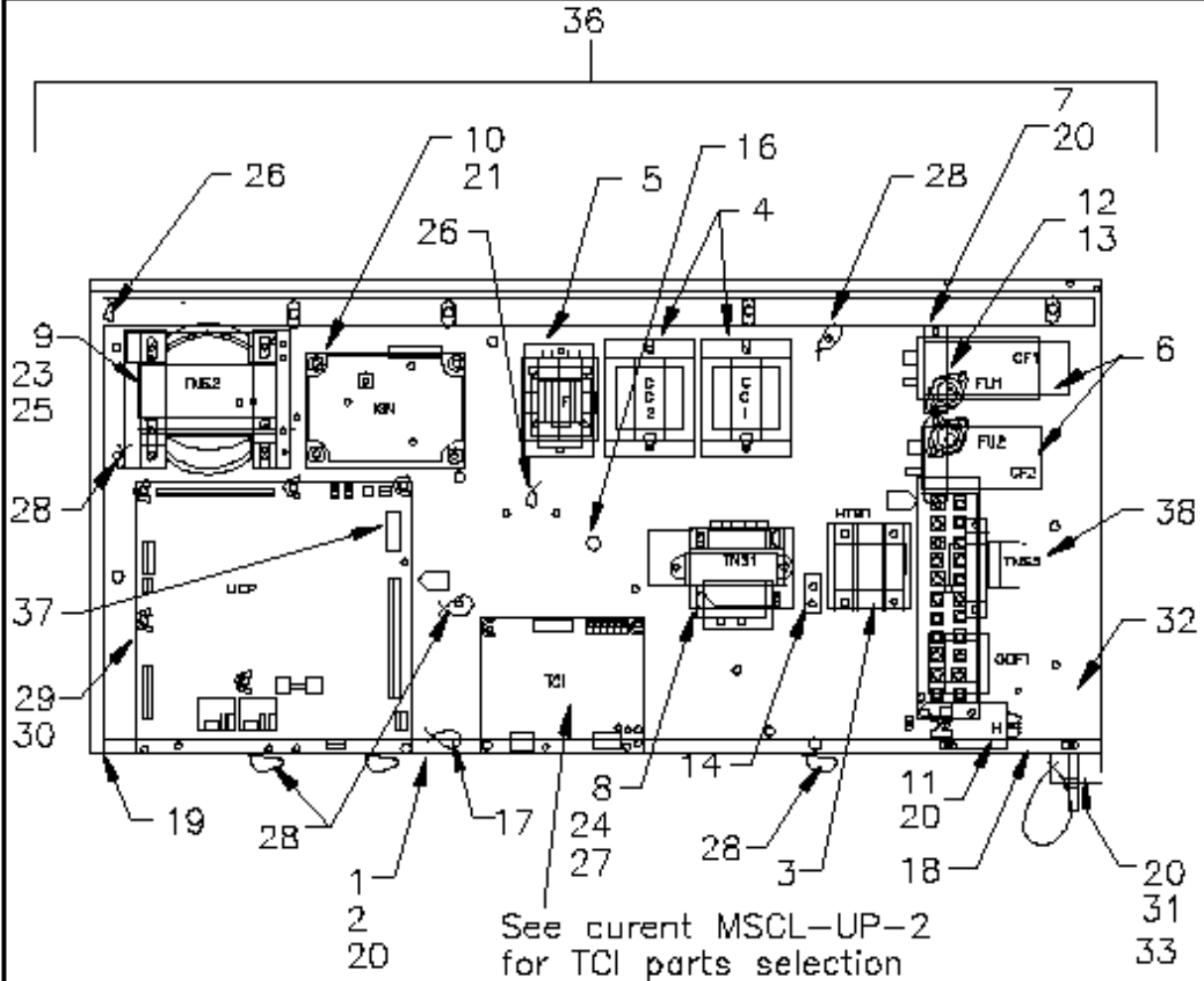
GENERAL ASSEMBLY VIEW 2  
Parts List Number: YCD353#YCDUP379  
Model Number: YCD210C4HACA

Part No.	Reference	Quantity	Description
BOF00388	22	1	BLOCKOFF;HEAT SECTION ASSEMBLY
BRK01996	69	1	BRACKET; LEFT HAT SECTION
CNL00238	19	0	CHANNEL;HEAT SECTION
CNT01584	62	1	CONTROL; LOW PRESSURE, OPEN 7, CLOSE 22 PSI, 55 LEAD LENGTH
CNT01585	62	1	CONTROL, LOW PRESSURE, 7 OPEN/22 CLOSE
COV01353	2	1	COVER, MANUAL FRESH AIR, 24.42 X 11.71
COV01377	3	1	COVER, EVAPORATOR TOP ASSEMBLY
COV01378	76	1	COVER, HEAT SECTION TOP ASSEMBLY
COV02222	21	1	COVER; COMBUSTION AIR INTAKE
FLR00063	49	4	FILTER; 20X25X2
FLR00099	50	2	FILTER, 20X20X2
GRD00450	48	2	GUARD; FAN, 27.5 DIA
INS00785	47	2	INSULATION; 1.12 ID X .38W X 6FT. LG
INS01168	63	2	INSULATION; 1.0 THK X 3.75 X 3.75
PNN01115	4	1	PANEL; EVAPORATOR, ACCESS, ASSEMBLY
PNN01118	6	1	PANEL; CONDENSER, SECTION ACCESS
PNN01121	9	1	PANEL; LEFT END, ASSEMBLY
PNN05741	70	1	PANEL;EXHAUST ASSEMBLY
PNN08157	5	1	PANEL, ACCESS HEAT SECTION ASSEMBLY
PNN08189	68	1	PANEL, ACCESS, HEAT SECTION ASSEMBLY
SUP01474	16	1	SUPPORT;CORNER POST FRONT ASSEMBLY
SUP01475	17	1	SUPPORT;CORNER POST REAR ASSEMBLY
SUP02786	18	1	SUPPORT, LEFT HAT SECTION ASSEMBLY
SUP03282	67	2	SUPPORT; FAN AND COIL
TUB04925	39	1	TUBE; LIQUID, DRIER TO COLLECTOR
TUB08094	40	1	TUBE; LIQUID (DRIER TO COLLECTOR)
TUB09818	37	1	TUBE; SUCTION, CKT 1
TUB09819	38	1	TUBE; SUCTION, CKT 2

# CONTROL PANEL ASSEMBLY

75003122

REV  
B



### LEGEND

CC	Compressor Contactor
CF	Fan Motor Capacitor
F	Indoor Fan Relay
FU	Fuse
H	Heat Relay
HTB	High Voltage Terminal Block
IGN	Ignition Control Module
ODF	Outdoor Fan Relay
TNS	Transformer
TCI	Trane Communication Interface
UCP	Unitary Control Processor

This is a typical illustration. The unit in the field may not appear exactly as shown.

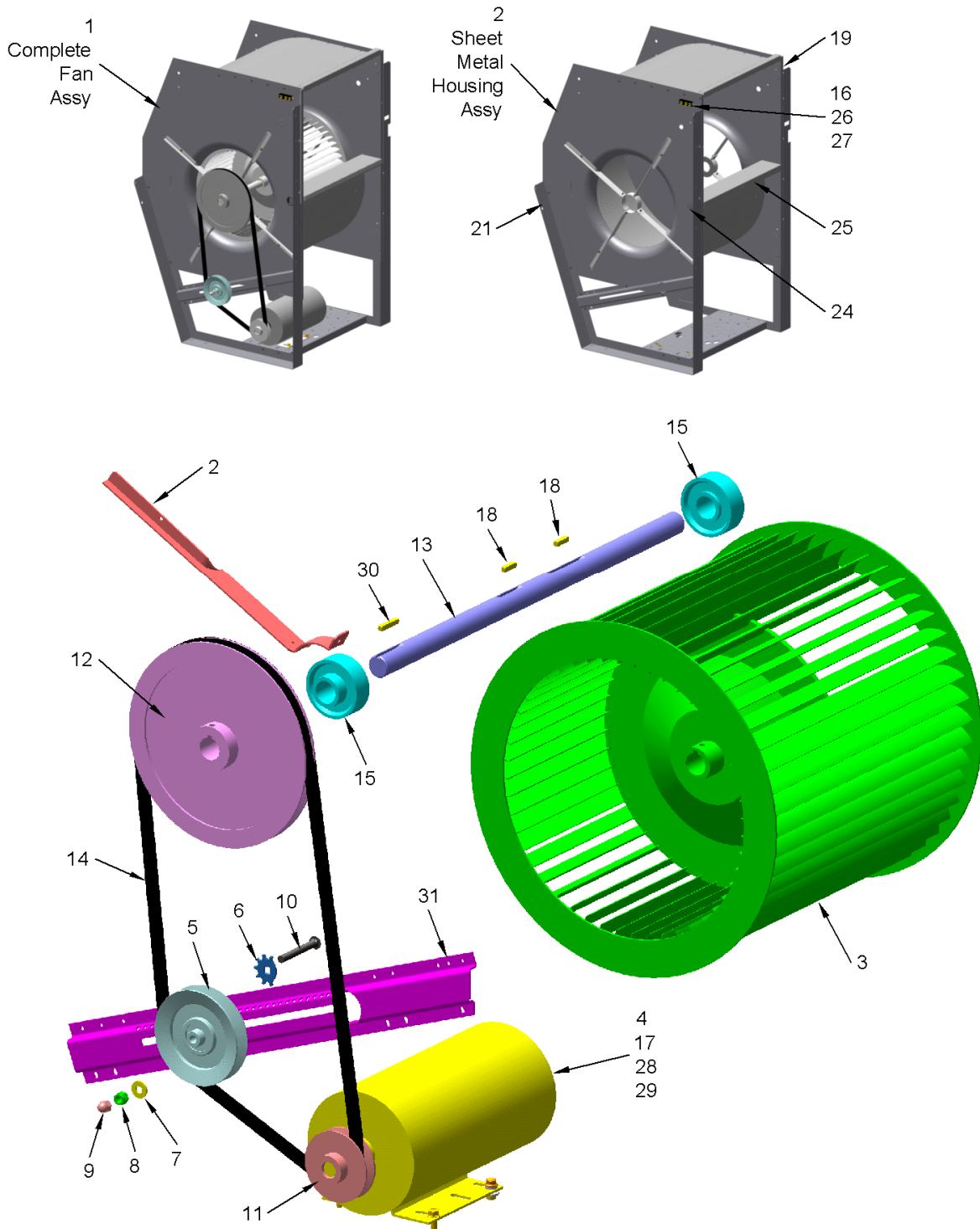
CONTROL PANEL ASSEMBLY  
Parts List Number: YCD353#YCDUP379  
Model Number: YCD210C4HACA

Part No.	Reference	Quantity	Description
BAF00354	33	1	BAFFLE; AIR SENSOR BRACKET
BLK00362	3	1	BLOCK; TERMINAL, 3 POLE 175 AMP, 600 VOLT
BLK00496	*	1	BLOCK; 22-POLE TERMINAL
BRK00549	7	1	BRACKET;CAPACITOR
BUS00181	17	1	BUSHING; SNAP, 1.75 INCH OD X 1.38 ID, MAX PANEL THICKNESS 0.125, BLACK NYLON
BUS00269	19	1	BUSHING; 1.31 ID X .45 LG SNAP BUSHING
BUS00367	18	1	BUSHING; SNAP, 1.09 ID
CNT02062	10	1	CONTROL, IGNITION MODULE, GAS
CON00077	14	1	CONNECTOR, ELECTRIC GROUND, 14-2 AWG SOLDERLESS
CPN01987	36	1	CONTROL PANEL ASSY;
CPT00455	6	1	CAPACITOR; 25 MFD, 440V, ROUND, W/O RESISTOR
CTR00264	4	2	CONTACTOR; 3 POLE, N.O., 30 FLA AT 600V
CTR00793	5	1	CONTACTOR; 2P, 35A INDUCTIVE, 240-600V, 24V COIL,50/60HZ
FUS01002	37	1	FUSE; 3 AMP, 250 VOLT TYPE F, MDL-3
GRM00039	31	1	GROMMET; RUBBER .25 ID X .05 GRV MLD
INS00799	27	1	INSULATION; .03 THK, FISCH PAPER
MOD00432	29	1	MODULE, UNITARY CONTROL PROCESSOR, OTP
PNE09245	32	1	PANEL; TERMINAL STRIP
PNN03596	1	1	PANEL;CONTROL BOX (SHORT)
PNN03597	2	1	PANEL;CONTROL MOUNTING (SHORT)
RLY01040	11	1	RELAY; SPDT, 120/208/240/277/480/600V, QUICK CONNECT TERM., 24V COIL
SCR00599	16	10	SCREW;10-24 X 1/2
SCR00906	20	31	SCREW; 8-32 X .50
SCR00907	23	4	SCREW; .25-20 X .50
SCR00909	30	4	SCREW, 6-32 X .75
TER00311	28	6	TERMINAL; 4 1/2IN. TIE CABLE
TER00312	26	3	TERMINAL; 8IN. TIE CABLE
TRR00664	9	1	TRANSFORMER; 350 VA, 460-575V PRI., 115-230V SEC.
TRR00826	8	1	TRANSFORMER; 75 VA, 460-575V PRI, 24V SEC
WAS00456	25	1	WASHER;LOCK,.25 ID X .49 OD
WAS00611	24	2	WASHER;LOCK, .19 ID X .39 OD
WIR01363	*	1	WIRE; 16" GROUND, #10 FORK X .250" PIGGYBACK END CONNECTORS
WIR02345	*	1	WIRE; HARNESS, CONTROL PANEL
WIR02906	*	1	WIRE; HARNESS, POWER
WIR03140	*	1	WIRE; SCROLL COMPRESSOR, CKT 2, 400-575V

# EVAPORATOR FAN ASSEMBLY

75000904

REV  
B



This is a typical illustration. The unit in the field may not appear exactly as shown.

EVAPORATOR FAN ASSEMBLY  
 Parts List Number: YCD353#YCDUP379  
 Model Number: YCD210C4HACA

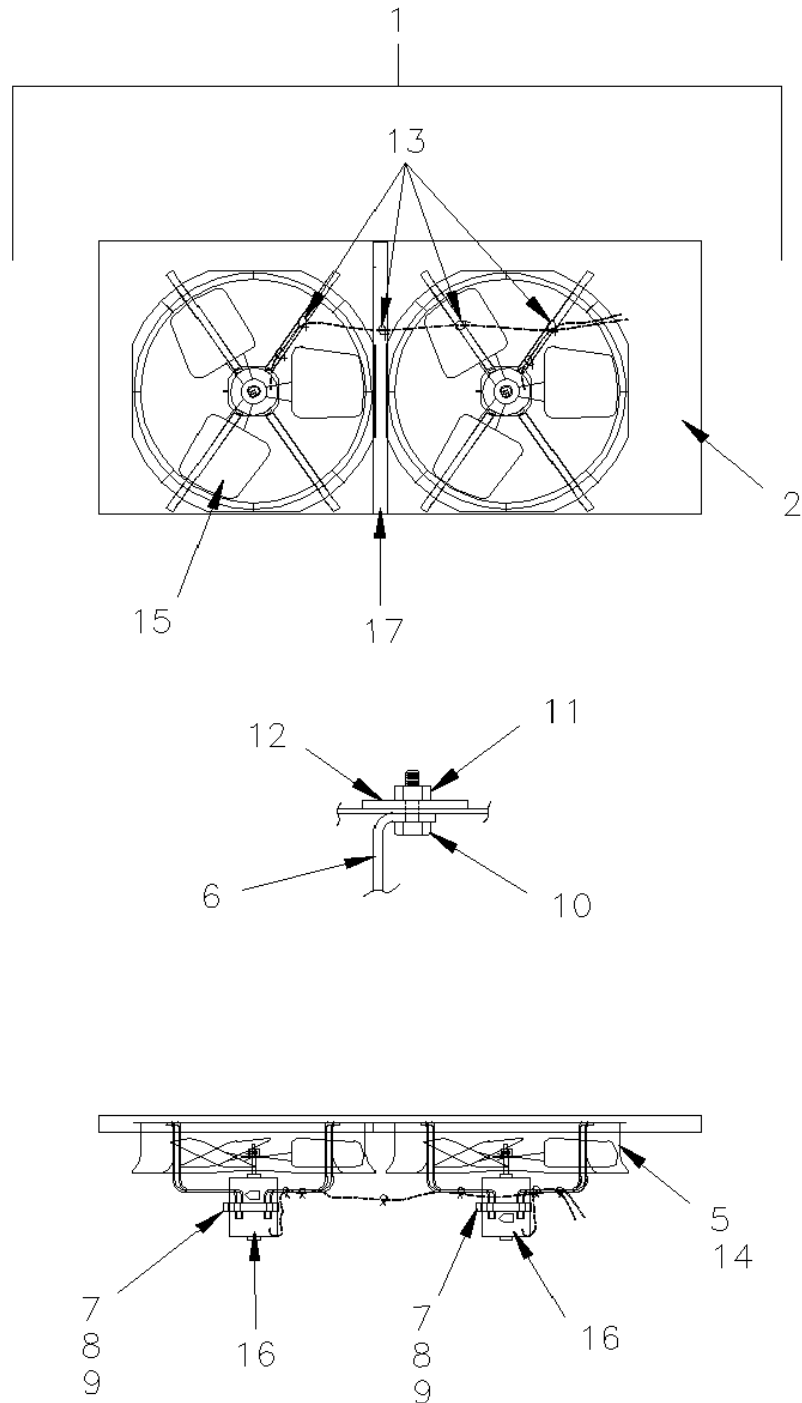
Part No.	Reference	Quantity	Description
B00237	14	1	BELT;V, BX68, 71.0 OUTSIDE LG. X 69.8 PITCH LG.
BLK00288	16	1	BLOCK; TERMINAL, 3 POLE, 20 AMP, 300V
BLT00217	10	1	BOLT, .38-16 X 2.50
BRG00740	15	2	BEARING; CARTRIDGE, BALL 1.00 BORE
BRK01161	2	8	BRACKET; BEARING ARM
BUS00269	24	1	BUSHING; 1.31 ID X .45 LG SNAP BUSHING
CON00306	28	1	CONNECTOR; .75 NOM
FAN02472	1	1	FAN; EVAPORATOR ASSEMBLY COMPLETE, DOWNFLOW
GER00321	6	1	GEAR; IDLER
GKT01722	19	0	GASKET;.12 X .75 X 50FT ROLL
GKT01722	25	1	GASKET;.12 X .75 X 50FT ROLL
HUS03268	2	1	HOUSING; EVAPORATOR FAN WELD ASSEMBLY
INS00572	26	1	INSULATION;.30 THICK
KEY00299	18	2	KEY; 1/4 IN X 1/4 IN X 1 IN
KEY00300	30	1	KEY; 1/4 IN X 1/4 IN X 1-1/2 IN
MOT03765	4	1	MOTOR; 5 HP AT 208-230/460/60/3, 3 HP AT 200/380-415/50/3, 56 HZ FRAME, 2 POLE, 3450 RPM (BOTH HP), BALL BEARING, ODP, THERMALLY PROTECT-ED
NUT00150	8	1	NUT; HEX, SELF LOCKING, .38-16
NUT00587	9	1	NUT; HEX CAP, 38-16
PLU00439	27	1	PLUG; RUBBER
SCR01074	21	8	SCREW; SHT METAL, 10-16 X .50, HEX WASHER HD
SHE00554	11	1	SHEAVE; 1VP44, 7/8IN. BORE
SHE01017	5	1	SHEAVE; IDLER, 1 GRV-A/B-FP, .375 BORE
SHE01479	12	1	SHEAVE; SINGLE GROOVE, 12.3IN. PITCH DIA., 1IN. BORE, BK130
SHF01504	13	1	SHAFT; FAN, 1 X 22.295
SLV00094	29	1	SLEEVE, .75 NOM
WAS00011	7	1	WASHER; 0.375 ID X .875 OD X .083 THK
WHL00625	3	1	WHEEL; FAN, STEEL, 15 DIA X 15 LG, 1.0 BORE, BELT
WIR01118	17	1	WIRE;MOTOR EXTENSION HARNESS

Condenser Fan and Orifice Assembly

75003108

REV  
A

Typical illustration. Unit may not appear exactly as shown.



## CONDENSER FAN AND ORIFICE ASSEMBLY

Parts List Number: YCD353#YCDUP379

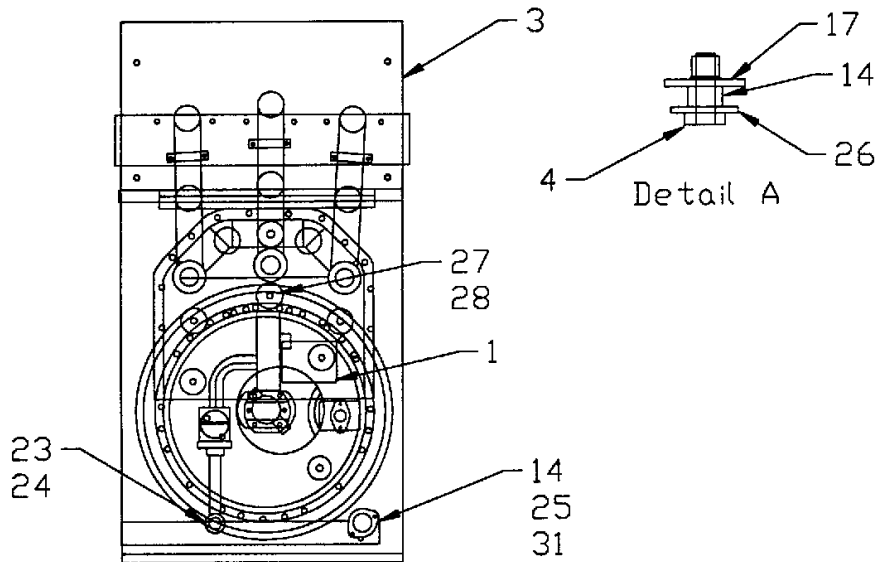
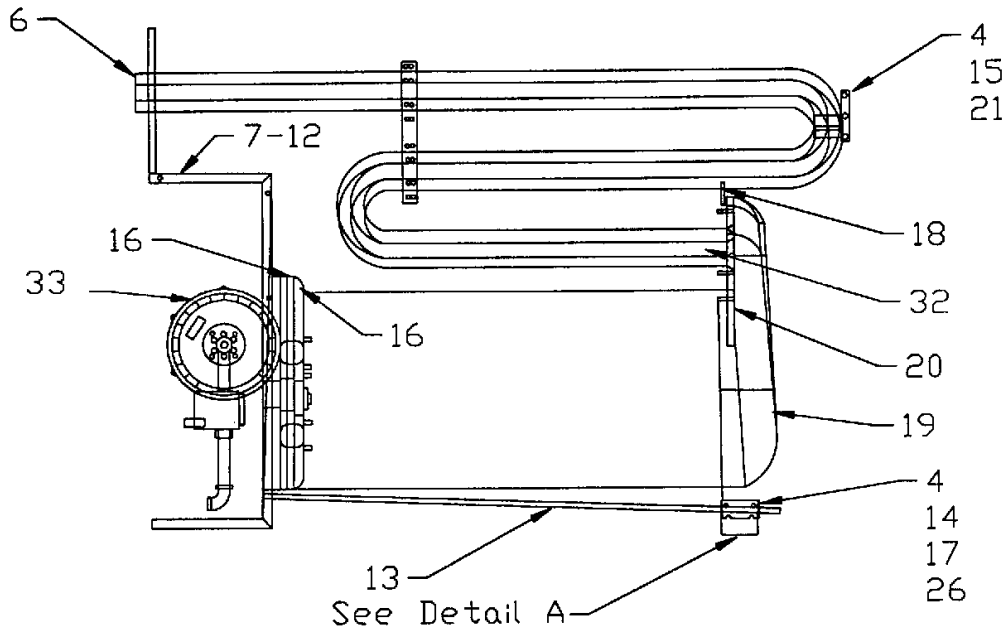
Model Number: YCD210C4HACA

Part No.	Reference	Quantity	Description
BRK01160	7	2	BRACKET, MOTOR MOUNT
BRK01632	6	8	BRACKET;MOTOR MOUNT, 13.77 LEG
COV01349	2	1	COVER, CONDENSER FAN
FAN02778	15	2	FAN; 4 BLADE, ALUM, 26 IN DIA, 32 DEGREE PITCH, CW, .625 BORE
FAN02815	1	1	FAN; ASSEMBLY, CONDENSER
KEY00820	*	2	KEY; 0.187 SQ X 1.26 LG, LOW CARBON CD STEEL
MOT09190	16	1	MOTOR; .75/1.0 HP, 380-415-460/50-60/1, 950/1125 RPM, 48 FRAME, BB, CCW, 1.9/2.5 FLA, 5.8 LRA, 25MFD AT 440 VAC.
MOT09192	16	1	MOTOR; .75/1.0 HP, 380-415-460/50-60/1, 950/1125 RPM, 48 FRAME, BB, CCW, 2.5/2.9 FLA, 5.8 LRA, 25MFD AT 440 VAC. WITHOUT SLINGER
NUT00009	9	2	NUT; .25-20, HEX LOCK
NUT00755	11	8	NUT; HEX LOCK, .31-18
ORF00576	5	1	ORIFICE;CONDENSER FAN
SCR01342	8	2	SCREW; .25-20 X 1.75 HEX MACHINE
SCR01583	10	8	SCREW;HEX CAP,.31-18X.75 HEX CAP,.31-18X.75
SLG00117	*	2	SLINGER; 7 IN OD X 1.63, .625 BORE.
SUP02788	17	1	SUPPORT, ANGLE
WAS00718	12	8	WASHER; .312 ID X 1.75 OD

Heat Exchanger Assembly

75000901

REV  
A



This is a typical illustration. The unit in the field may not appear exactly as shown.

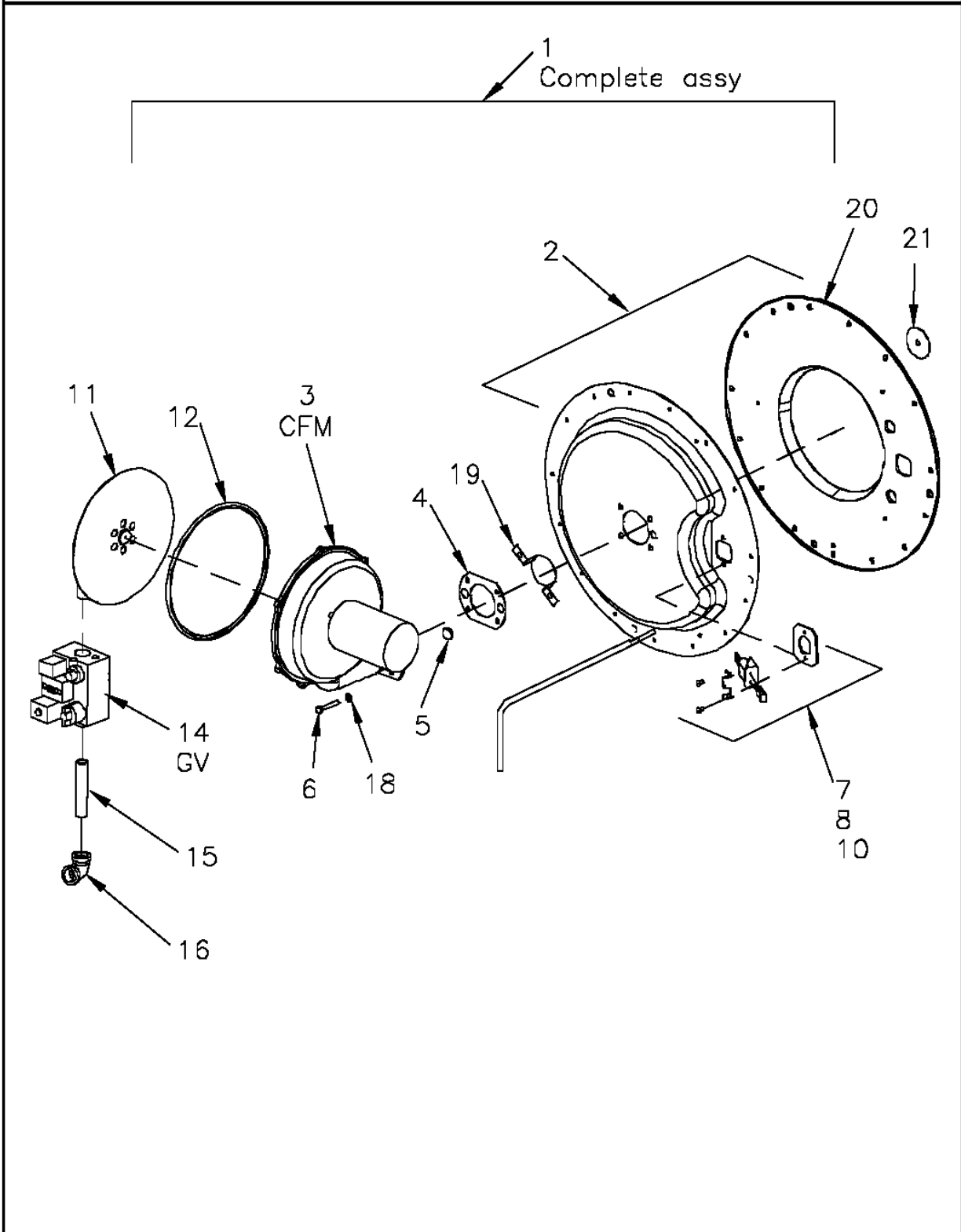
HEAT EXCHANGER ASSEMBLY  
 Parts List Number: YCD353#YCDUP379  
 Model Number: YCD210C4HACA

Part No.	Reference	Quantity	Description
ADH00007	30	0	ADHESIVE; SPRAY 3M-77 (SHIPPING UOM 16 OZ HAZ)
ADH00015	10	0	ADHESIVE; FIBERGLASS-H2O BASE, 55 GAL DRUM ONLY
CMP00285	21	5	CLAMP; 2.25 DIA
CNT01220	25	1	CONTROL; TEMP, OPEN 160F, SPST, LIMIT, NORMALLY CLOSED, W/CAPIL-LARY
COV01350	19	1	COVER; DRUM END COLLECTOR
ELL00028	24	1	ELBOW; 90 DEGREE, PIPE, .75 NPS, 150# MI
EXC01326	1	1	EXCHANGER, GAS HEAT ASSEMBLY, 350 MBH, SHIPS WITH BURNER PLATE, COMBUSTION BLOWER ASSEMBLY, GAS VALVE, AND IGNITER CONTROL
GKT01115	12	0	GASKET; POLYURETHANE, OPEN CELL, .75 THK X .75 W X 25FT. ROLL
GKT01722	11	0	GASKET;.12 X .75 X 50FT ROLL
GKT02141	16	2	GASKET; .06 THK X 18.85 DIAMETER, HI-TEMP
GKT02142	18	1	GASKET; .06 THK, HI-TEMP, DRUM END COVER
INS01204	9	1	INSULATION; .50 THK X 27.48 X 52.72
INS01675	20	1	INSULATION; DRUM END PLATE
NIP00098	23	1	NIPPLE; 0.75 NPS X 4.75
PLT01344	3	1	PLATE; EXHAUST
PNN01026	8	1	PANEL; GAS VESTIBULE
PNN01027	7	1	PANEL; GAS VESTIBULE
SCR01070	4	1	SCREW; HEX SOCKET, .25-20 X .75
SCR01342	28	4	SCREW; .25-20 X 1.75 HEX MACHINE
SPC00211	14	1	SPACER;.34 ID X .44 OD X .25
SPC00323	31	2	SPACER; .194 ID X .312 LG, .375 OD
SUP01428	17	1	SUPPORT; DRUM REAR
SUP01430	15	1	SUPPORT; TUBE
TRB00022	6	5	TURBULATOR;
TUB04716	13	1	TUBE; TEMPERATURE PROBE
TUB07189	32	5	TUBE; FORMED TUBE END (FLARED), 2.00" OD X 5.015" TOTAL LENGTH, 2.562" FLARED TUBE END OUTER FLANGE DIA, 18SR STAINLESS STEEL
WAS00011	26	1	WASHER; 0.375 ID X .875 OD X .083 THK
WAS00720	27	4	WASHER; .375 ID X 2.00 OD

Burner Plate Assembly  
Typical Illustration

75000903

REV  
E



BURNER PLATE ASSEMBLY  
 Parts List Number: YCD353#YCDUP379  
 Model Number: YCD210C4HACA

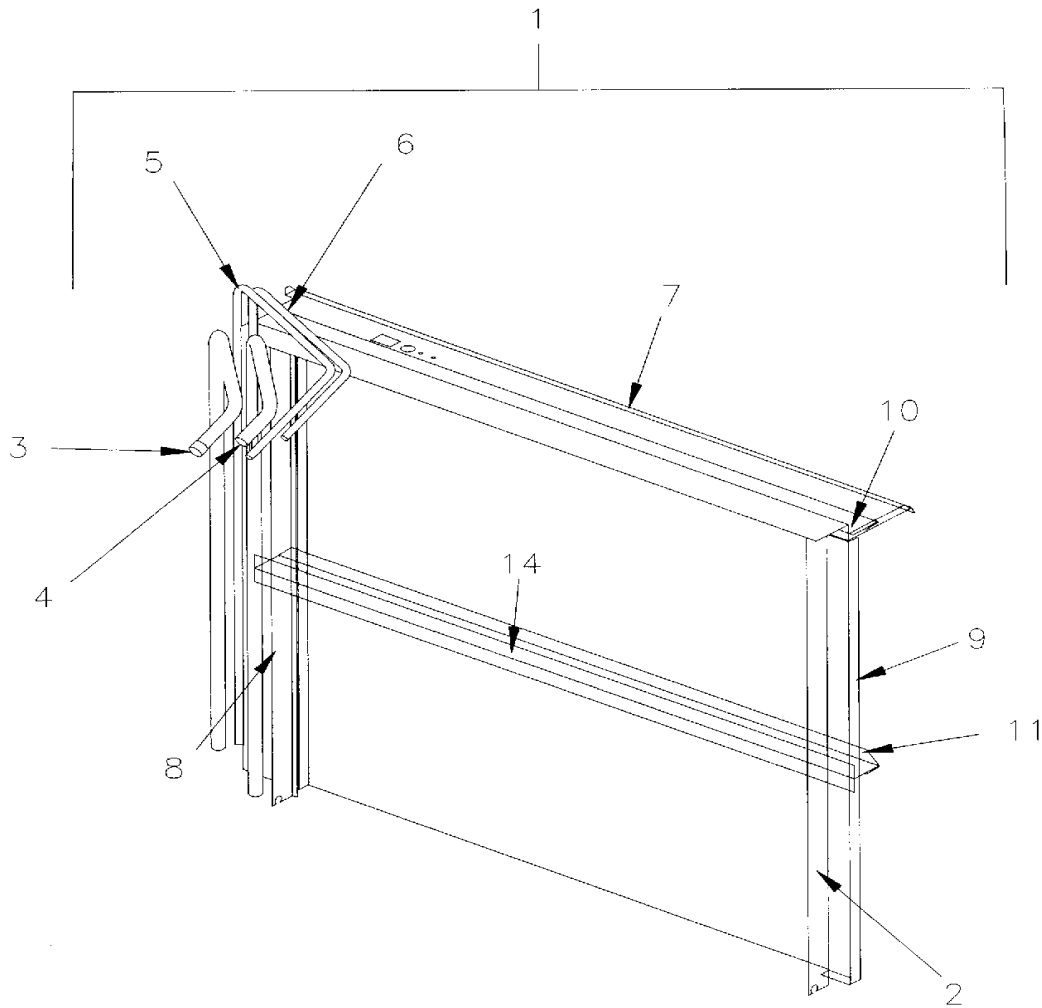
Part No.	Reference	Quantity	Description
BAF00304	19	1	BAFFLE;COMBUSTION BLOWER
CNT01221	14	1	CONTROL; VALVE, GAS, .75 NPTI, 24 VAC, NEGATIVE PRESSURE OPERATION
ELL00028	16	1	ELBOW; 90 DEGREE, PIPE, .75 NPS, 150# MI
FAN02161	3	1	FAN; BLOWER, COMBUSTION, W/MOTOR, 1/10 HP, 208-230/60/1
GKT03053	12	1	GASKET; EDGE TRIM, .062 X 9.0 DIAMETER
GKT03131	10	1	GASKET; FIBERGLASS REINF., .125 X 2.76 X 2.00
GKT03283	4	1	GASKET; .060 X 4.16 DIA.
GLS00144	5	1	GLASS; SIGHT, .75 OD X .12 THK
IGN00053	7	1	IGNITOR; CONTROL, 2000F, 115V
INS01719	20	1	INSULATION; BURNER HEAT SHIELD BARRIER, 8.76" ID X 19.2" OD
NIP00098	15	1	NIPPLE; 0.75 NPS X 4.75
NUT00004	13	4	NUT; 10-32, HEX LOCK
NUT00009	22	2	NUT; .25-20, HEX LOCK
ORF01031	11	1	ORIFICE; #W-.386 DIAMETER
PLT01993	2	1	PLATE; BURNER WELD, 350 MBH, DOES NOT INCLUDE GASKET, USE GKT2141 & INS1719
PLT02687	1	1	PLATE; BURNER CAP ASSEMBLY, 17" DRUM, WITH GAS VALVE AND COMBUSTION BLOWER ASSEMBLY
SCR01070	6	4	SCREW; HEX SOCKET, .25-20 X .75
SCR01564	8	2	SCREW; 10-32 X .38, SPECIAL BUTTONHEAD SOCKET, STAINLESS STL
TUB08714	*	1	TUBE; DRAIN, .19 ID X .06W X 14 INCH, RUBBER
WAS00720	21	5	WASHER; .375 ID X 2.00 OD
WAS00870	18	4	WASHER; .281 ID X .734 OD

# Evaporator Coil Assembly

75003125

REV  
A

Typical illustration. Unit may not appear exactly as shown.



EVAPORATOR COIL ASSEMBLY  
 Parts List Number: YCD353#YCDUP379  
 Model Number: YCD210C4HACA

Part No.	Reference	Quantity	Description
BOF01177	9	1	BLOCKOFF; EVAPORATOR COIL REAR
BOF01178	7	1	BLOCKOFF; EVAPORATOR COIL TOP
BOF01181	8	1	BLOCKOFF; EVAPORATOR COIL FRONT
BRK02399	10	1	BRACKET; TOP FILTER RACK
CNL00733	11	2	CHANNEL; FILTER RACK
COL10162	1	1	COIL; INDOOR ASSEMBLY
COL10165	2	1	COIL; INDOOR, WELD ASSEMBLY
GKT01115	*	0	GASKET; POLYURETHANE, OPEN CELL, .75 THK X .75 W X 25FT. ROLL
HDR00695	3	1	HEADER; SUCTION ASSY, CKT 2
HDR00696	4	1	HEADER; SUCTION ASSY, CKT 1
HDR00697	5	1	HEADER; SHORT ORIFICE, CKT 2
HDR00698	6	1	HEADER; SHORT ORIFICE, CKT 1
SCR01623	*	0	SCREW; SHEET METAL, 10-16 UNC X 1/2, HIGH TORQUE, INDENT HEX-WASHER HEAD
SEL00383	14	1	SEAL;FOAM TAPE, NEOPRENE CLOSED CELL, 1/4 X 3/4 X 50 FEET

Selected Assembly: a4b5c8f3-4691-47f8-81ed-f475fbb905a0

ECONOMIZER

Parts List Number: YCD353#YCDUP379

Model Number: YCD210C4HACA

ECONOMIZER

75003840

REV  
A

FOR IDENTIFICATION OF  
ECONOMIZER PARTS, THE  
FOLLOWING MODEL NUMBER  
SHOULD BE ENTERED INTO  
CATS.

BAYECON062BB

ECONOMIZER

Parts List Number: YCD353#YCDUP379

Model Number: YCD210C4HACA

Part No.	Reference	Quantity	Description
----------	-----------	----------	-------------

VOYAGER

75012144

REV  
A

OPTIONAL FIELD INSTALLED ACCESSORIES

ACCESSORY TYPE

ECON = Economizer	ISLT = Isolator
ASCT = Anti-Cycle Timer	KSKT = Start Accessory Kit
BARM = Barometric Relief	LEGS = Snow Legs
BASE = Base	LIFT = Roof Mount Kit
BURN = Burner	LOAM = Low Ambient
CTHI = Board-Convention Interface	LPKT = L.P. Kit
CURB = Roofcurb	MOTR = Low Ambient Motor Kit
CCHT = Crankcase Heater	NXKT = No Oxide Kit
DFSR = Air Diffuser	PLNM = Plenum
DMPR = SS Damper	PLUS = Plus One Kit
DNKT = Downflow Kit	PSMN = Power Supply Monitor Kit
FCCV = Flow Control Check Valve	PWRX = Power Exhaust
FLSW = Flow Switch	QACB = Quick Adapt Curb
FLTR = Filter	RLAY = Relay
FRST = High Temperature Sensor	SENS = Sensor
GARD = Coil Guard	SPEK = Single Source Power Entry
HALT = High Altitude Kit	STAT = Thermostat
HSDR = Optimized Sheave Accessory	STMT = Elapsed Time Meter
HSMT = Oversized Motor Kit or High Static Motor	TBKT = Thru Base Utility Kit
HTR = Electric Heater (Digit 7 is used to differentiate the products accessory is used with)	TEST = Test Accessory
ICSI = Board Communication Interface	TIME = ICS Interface Kit
	TXVA = Thermal Expansion Valve Kit
	TXVH = Thermal Expansion Valve Kit
	VDPR = Vent Damper
	WATR = Hot Water or Steam Coil
	2STG = 2 Stage Gas

**When identifying accessories please  
refer to WAVE94591.**

OPTIONAL FIELD INSTALLED ACCESSORIES

Parts List Number: YCD353#YCDUP379

Model Number: YCD210C4HACA

Part No.	Reference	Quantity	Description
----------	-----------	----------	-------------